

How to find us!

The Old Fire Station
West Bar
Sheffield
S3 8PT
Tel: - 07399 122268
07399 122305
07792 370485

How to find us:

By Tram (it will take you approximately 10 minutes to walk from tram stop)

- Get off the tram at the Castle Gate Tram Stop



- Walk down Angel street passing Argos and the Premier Inn Hotel



- Continue walking past Snig Hill police Station



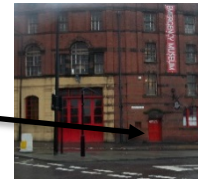
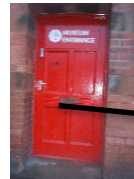
- Continue past the Crown court and the Armadillo Self storage



- Continue walking and you will see the Emergency Services Museum in front of you



- Press the buzzer on the red door and we will let you in



By Bus (from the Pond St Bus Station) or the Train Station (approximately 15/20 minutes to walk to our office)

- Walk down Pond Street

- Turn onto Paternoster Row



- Take a right turn onto Howard St

- Walk past Sheffield Hallam University Main entrance



- Cross the road at the crossing (Arundel Gate)

- Continue right on Arundel Gate past the Millennium Galleries, Central Library, Lyceum Theatre and Crucible



- Walk past the bus interchange
- Continue past the British Heart Foundation shop and Poundland

- Cross the road at the lights and cross the tram lines



- Follow the route above from Castle Gate tram stop on page 1

Buses from Pond Street bus station to our office:

Number 35 (stand B1) 10 minutes to each hour

Number 57 (stand B1) 2 Minutes past each hour

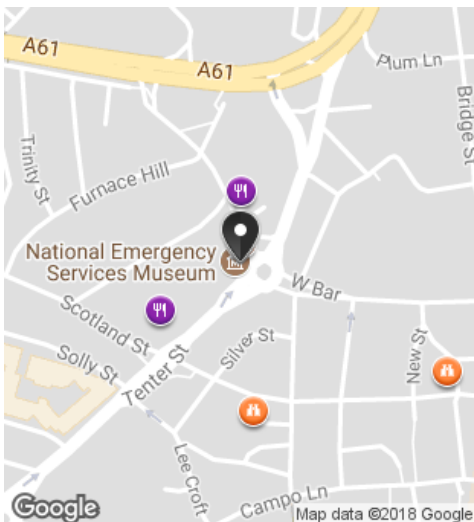
Bus from Arundel Gate:

Number 35 (Stand AG7) 54 minutes past each hour)

Car parking:

We do not have our own car park but there are pay and display parking close by or on nearby side streets (check the individual streets for parking restrictions etc)

<http://www.emergencymuseum.org.uk/VISITOR%20PARKING.pdf>



If you have any problem finding us please ring us on the numbers above and we can arrange to meet you in town and take you to our new office

For an interactive map please check:

<http://www.emergencymuseum.org.uk/contactus.html>